

**SUBJECT PROPERTY**  
**1800 WOODSON RD**  
 OVERLAND, MO

1800 Woodson Rd  
 Saint Louis, MO 63114

**+/- .75 Acres - Overland, MO**

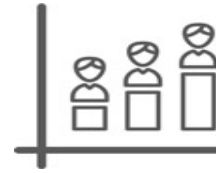
**FOR GROUND LEASE OR BTS**

# THE SPACE

Location	1800 Woodson Rd, Saint Louis, MO, 63114
COUNTY	St. Louis
Cross Street	Page & Woodson
Traffic Count	+/- 36,000 ADT

# HIGHLIGHTS

- GPS: 38.68741° N, 90.36171° W



## POPULATION

1.00 MILE	3.00 MILE	5.00 MILE
9,676	103,173	242,773



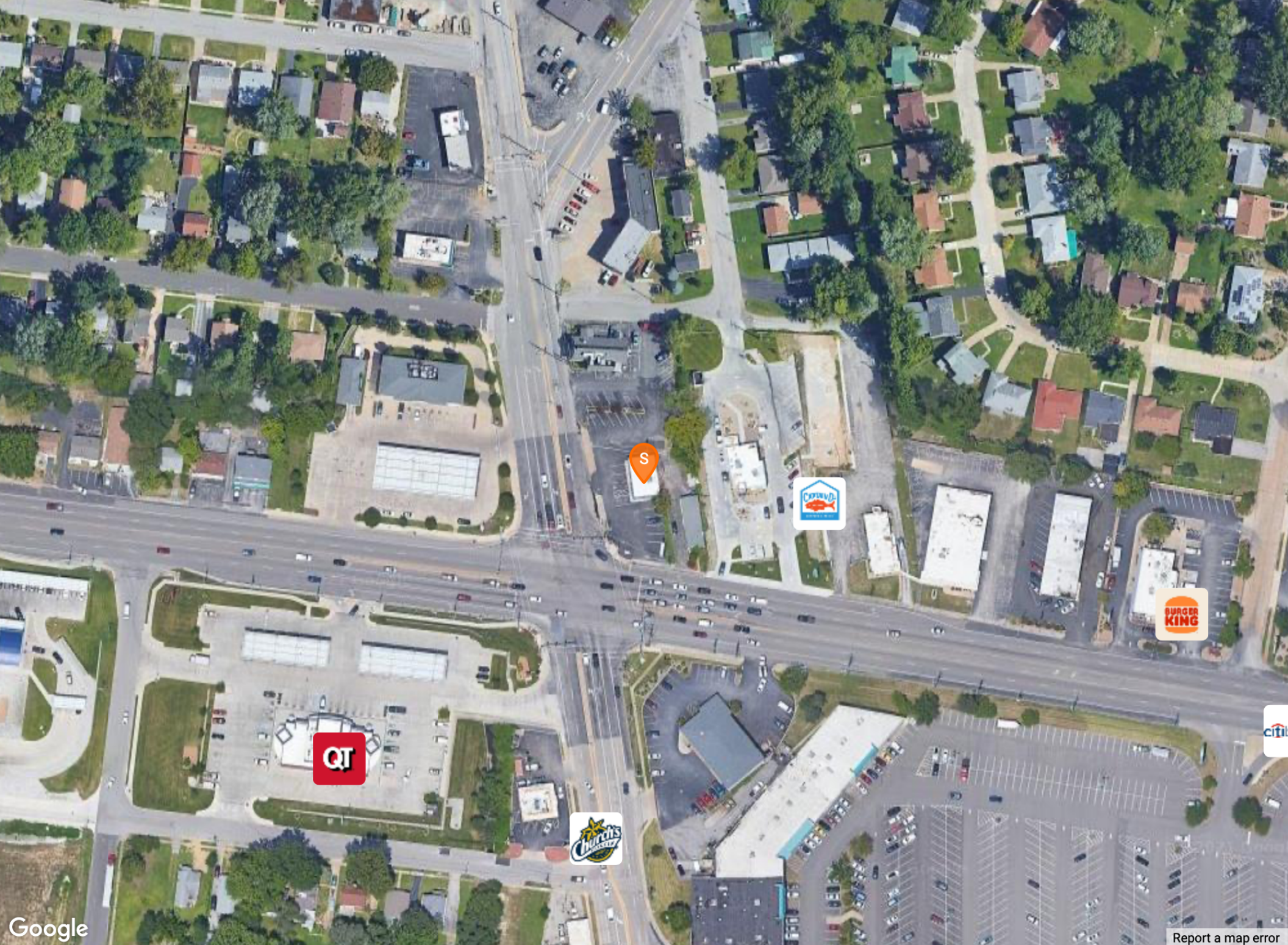
## AVERAGE HOUSEHOLD INCOME

1.00 MILE	3.00 MILE	5.00 MILE
\$60,665	\$88,378	\$94,411

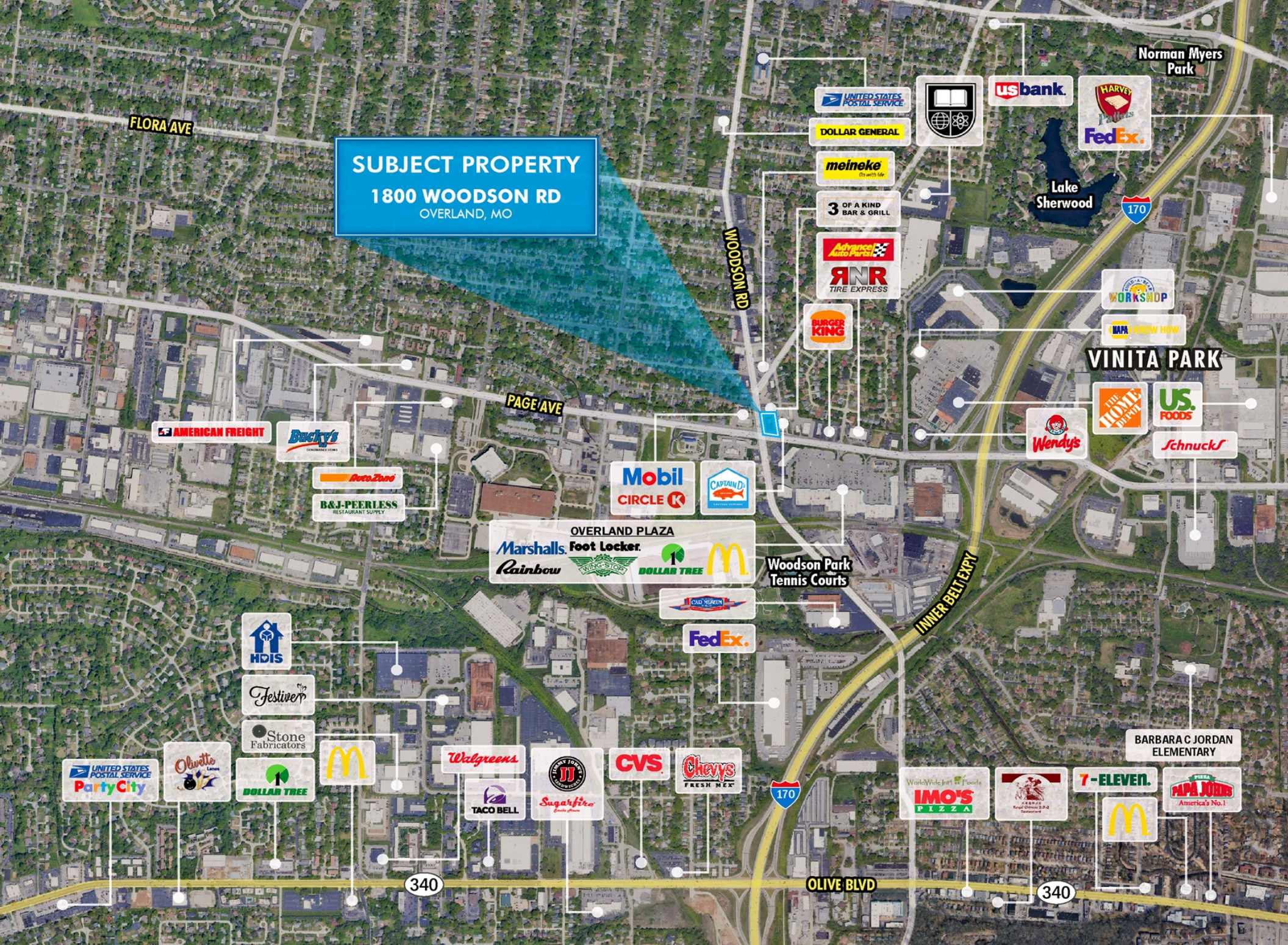


## NUMBER OF HOUSEHOLDS

1.00 MILE	3.00 MILE	5.00 MILE
4,069	43,903	102,474



**SUBJECT PROPERTY**  
**1800 WOODSON RD**  
OVERLAND, MO



FLORA AVE

WOODSON RD

PAGE AVE

INNER BELT EXPWY

OLIVE BLVD

Norman Myers Park

Lake Sherwood

VINITA PARK

Woodson Park Tennis Courts

BARBARA C JORDAN ELEMENTARY

AMERICAN FREIGHT

Bucky's

AutoZone

B&J-PEERLESS RESTAURANT SUPPLY

HOIS

Festive

Stone Fabricators

UNITED STATES POSTAL SERVICE  
Party City

Obotte

DOLLAR TREE

McDonald's

Walgreens

TACO BELL

Sugarfire

CVS

Chevy's FRESH MEX

UNITED STATES POSTAL SERVICE

DOLLAR GENERAL

meineke

3 OF A KIND BAR & GRILL

Advanced Auto Parts

RNR TIRE EXPRESS

BURGER KING

Mobil CIRCLE K

CAPTAIN D'S

OVERLAND PLAZA  
Marshalls, Foot Locker, Rainbow, Winn-Dixie, DOLLAR TREE, McDonald's

ROAD WARRIOR

FedEx

us bank

us bank

HARVEY KALLES  
FedEx

WORKSHOP

KNOW HOW

Wendy's

THE HOME DEPOT

US FOODS

Schnuck's

WorldWide Inn & Foods  
IMO'S PIZZA

McDonald's

7-ELEVEN

McDonald's

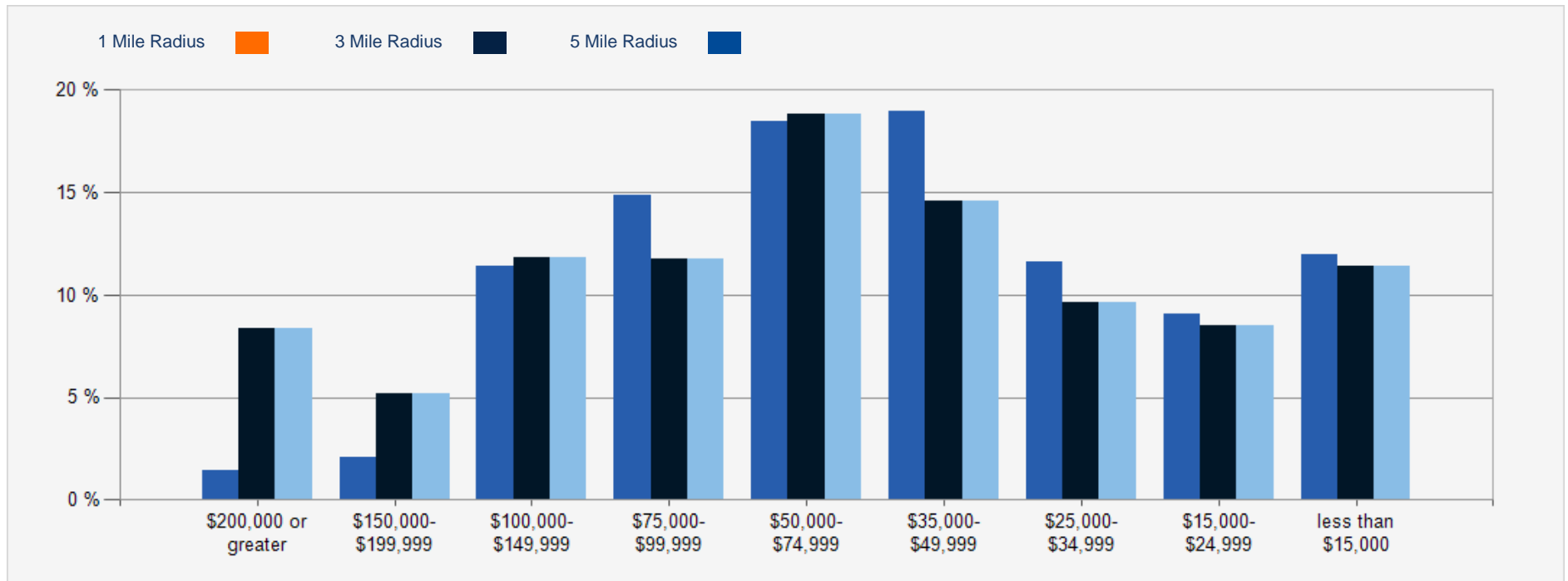
PAPA JOHN'S  
America's No. 1

340

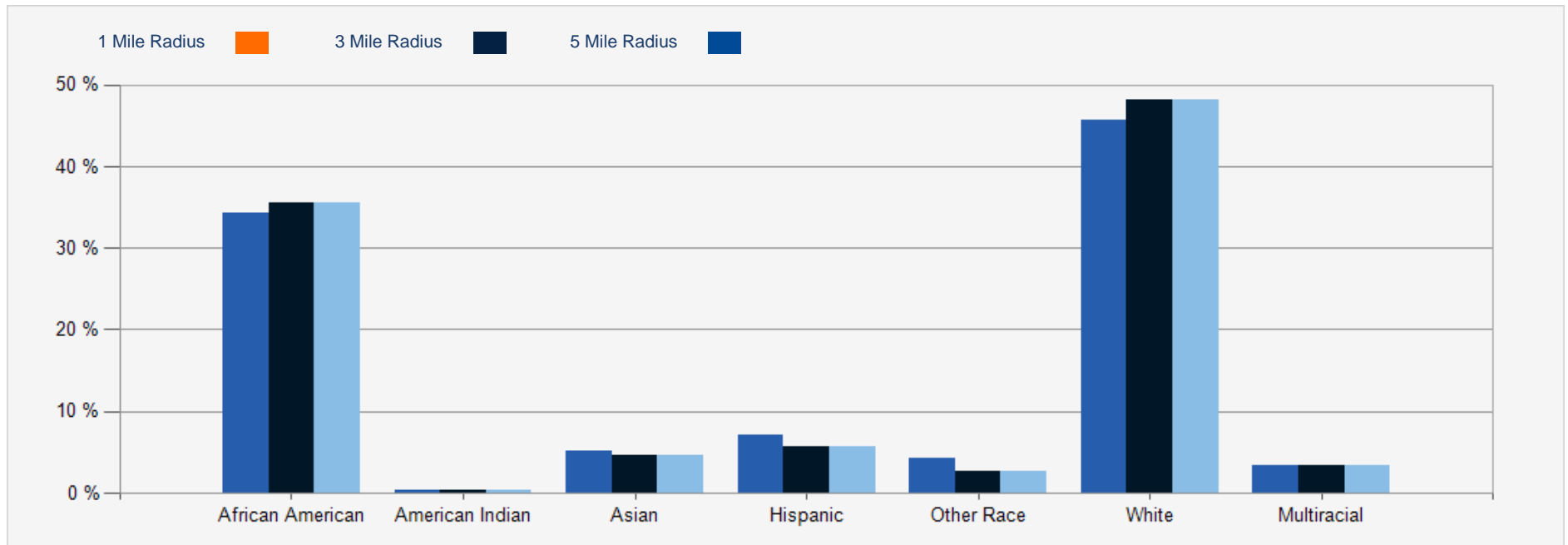
170

340

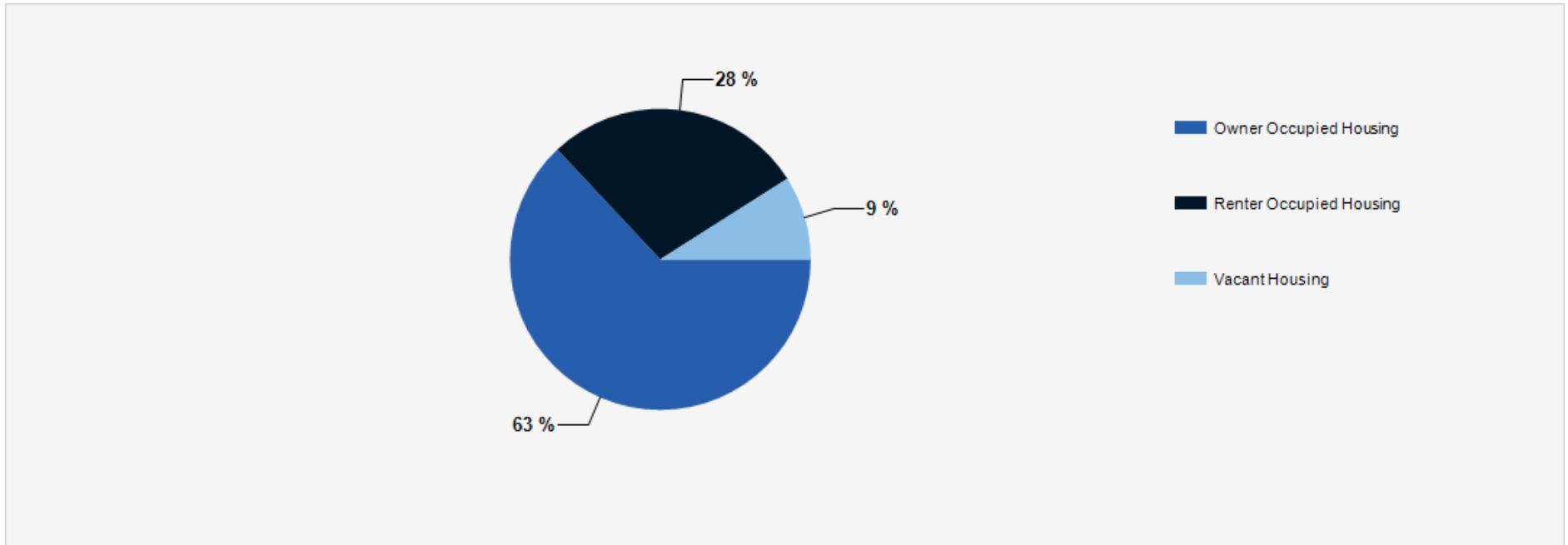
## 2021 Household Income



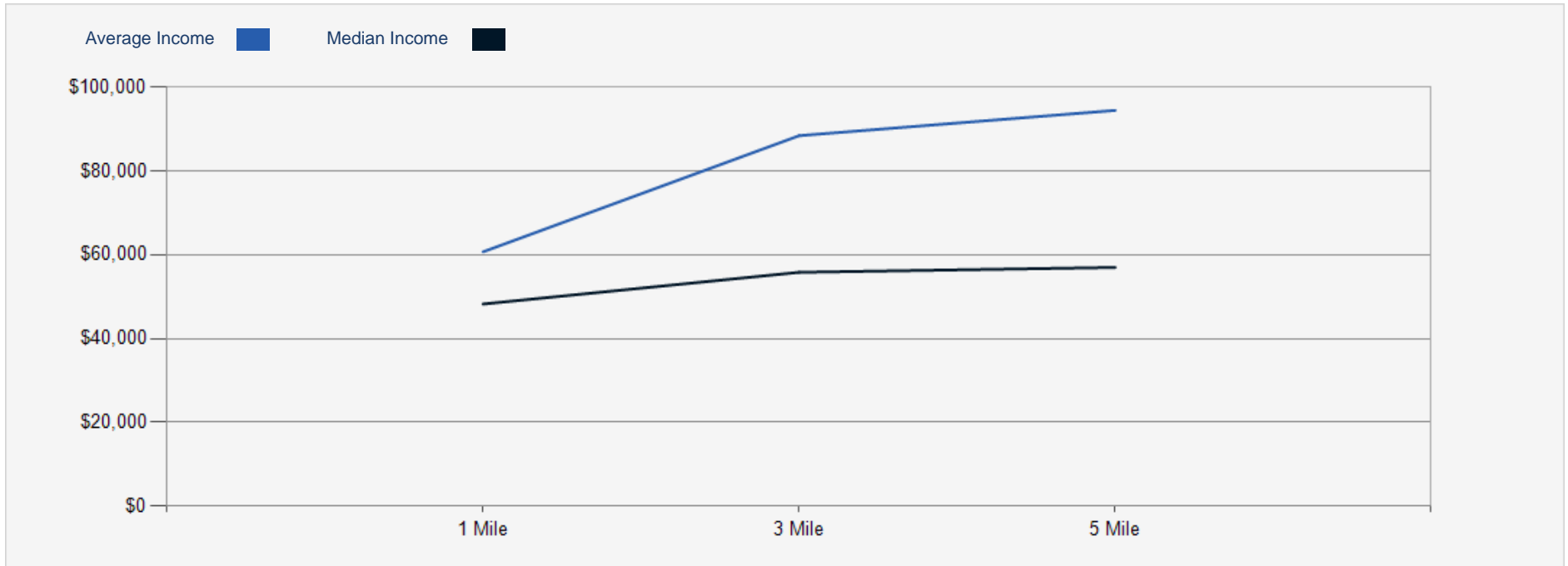
## 2021 Population by Race



## 2021 Household Occupancy - 1 Mile Radius



## 2021 Household Income Average and Median



# +/- .75 Acres - Overland, MO

## CONFIDENTIALITY and DISCLAIMER

The information contained in the following offering memorandum is proprietary and strictly confidential. It is intended to be reviewed only by the party receiving it from Baldrige Properties, LLC and it should not be made available to any other person or entity without the written consent of Baldrige Properties, LLC.

By taking possession of and reviewing the information contained herein the recipient agrees to hold and treat all such information in the strictest confidence. The recipient further agrees that recipient will not photocopy or duplicate any part of the offering memorandum. If you have no interest in the subject property, please promptly return this offering memorandum to Baldrige Properties, LLC. This offering memorandum has been prepared to provide summary, unverified financial and physical information to prospective purchasers, and to establish only a preliminary level of interest in the subject property.

The information contained herein is not a substitute for a thorough due diligence investigation. Baldrige Properties, LLC has not made any investigation, and makes no warranty or representation with respect to the income or expenses for the subject property, the future projected financial performance of the property, the size and square footage of the property and improvements, the presence or absence of contaminating substances, PCBs or asbestos, the compliance with local, state and federal regulations, the physical condition of the improvements thereon, or financial condition or business prospects of any tenant, or any tenant's plans or intentions to continue its occupancy of the subject property.

The information contained in this offering memorandum has been obtained from sources we believe reliable; however, Baldrige Properties, LLC has not verified, and will not verify, any of the information contained herein, nor has Baldrige Properties, LLC conducted any investigation regarding these matters and makes no warranty or representation whatsoever regarding the accuracy or completeness of the information provided. All potential buyers must take appropriate measures to verify all of the information set forth herein. Prospective buyers shall be responsible for their costs and expenses of investigating the subject property.

*Exclusively Marketed by:*

**Ryan Baldrige**

Lic. RE Broker

(314) 504-4083

ryanbaldrige@me.com

